

A CASE STUDY

Naval Building One



PROJECT OVERVIEW

Naval Building One is the reconsolidation of military headquarters here in San Diego and brings 18 different site locations under one roof and houses approximately 1,900 personnel. This federal property in the heart of the Gaslamp has been given new life to serve both as a military base and civilian office space and opened its doors in January of 2021.

Naval Base San Diego is the principal homeport of the Pacific Fleet. The city is home to 213 individual commands. The Navy has been working for years to consolidate and improve upon existing real estate in the city of San Diego. This is one of the largest installations to date for bkm OfficeWorks and one of the largest furniture installations in San Diego history.

CLIENT VISION

Despite delays created by the COVID-19 pandemic, bkm OfficeWorks was able to work closely with Navy design teams, our designers, and vendors to outfit a brand-new space for 1,900 personnel. The project was delivered on time and on schedule. The Naval Building One building features a combination of high design, functionality, open collaborative plans, and natural lighting.

PARTNERS



SCOPE

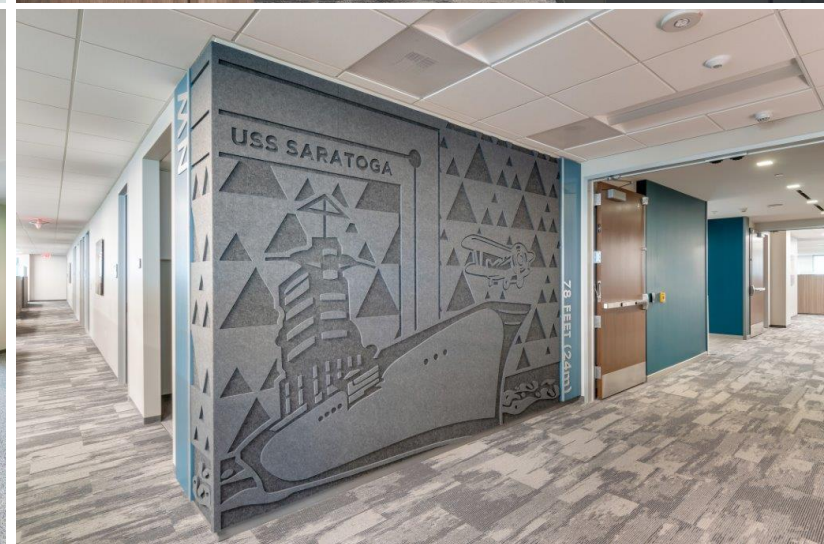
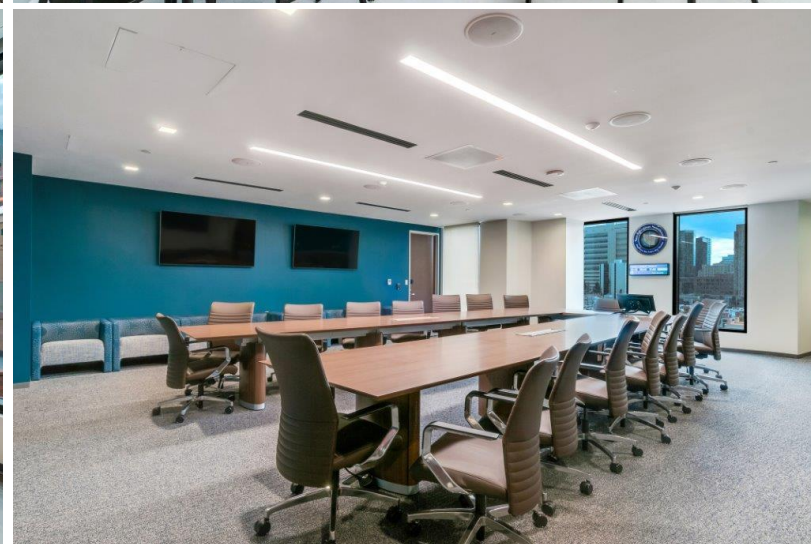
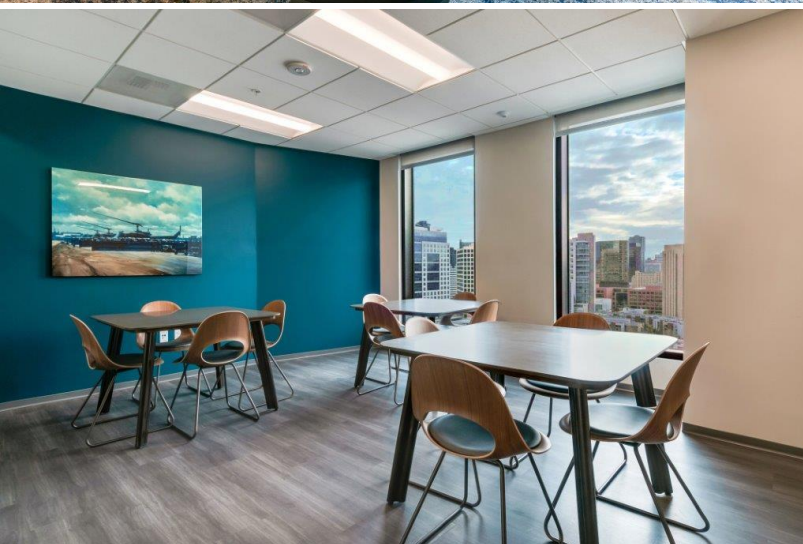
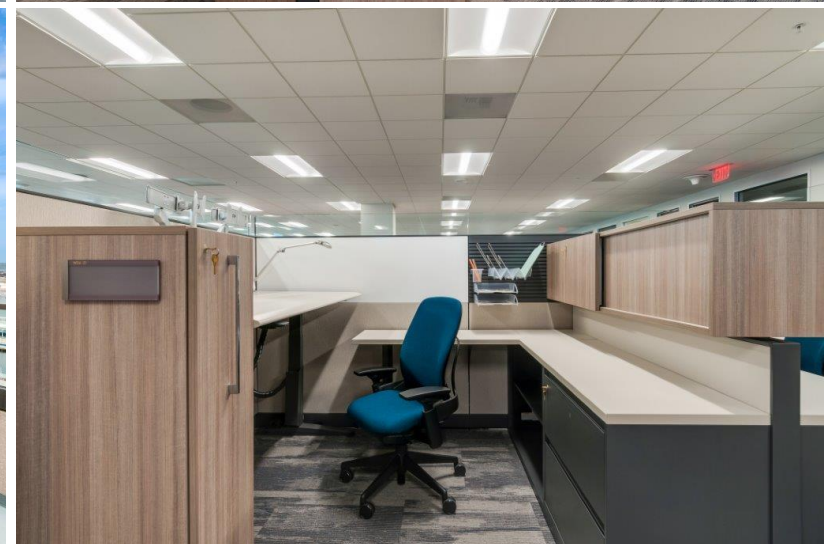
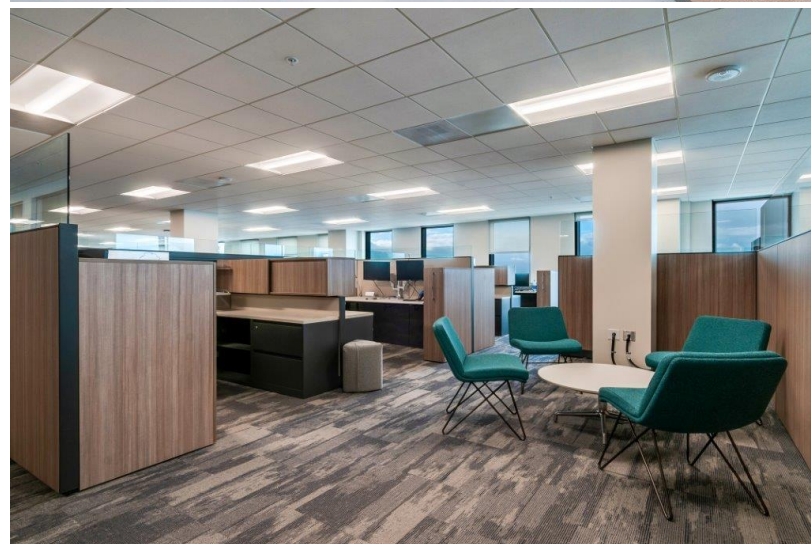
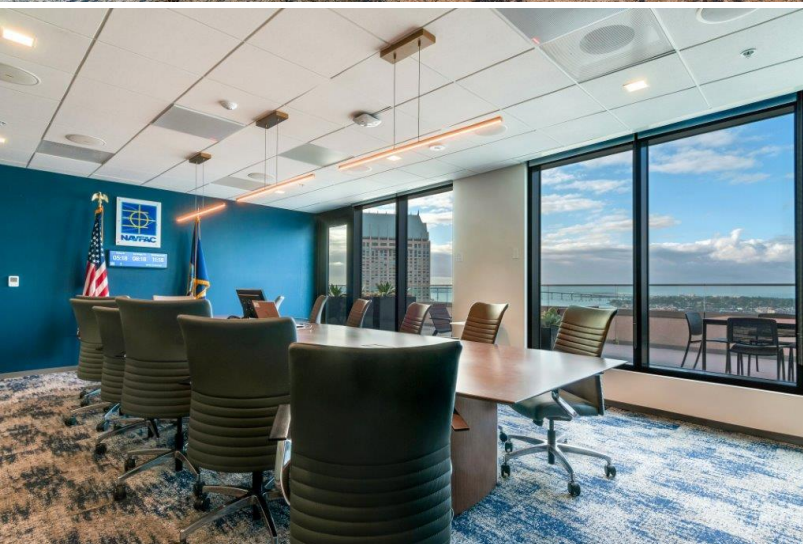
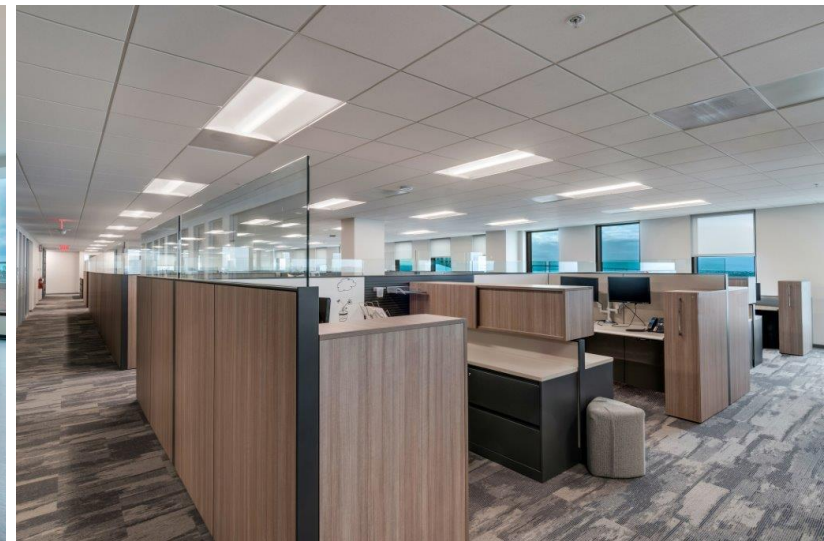
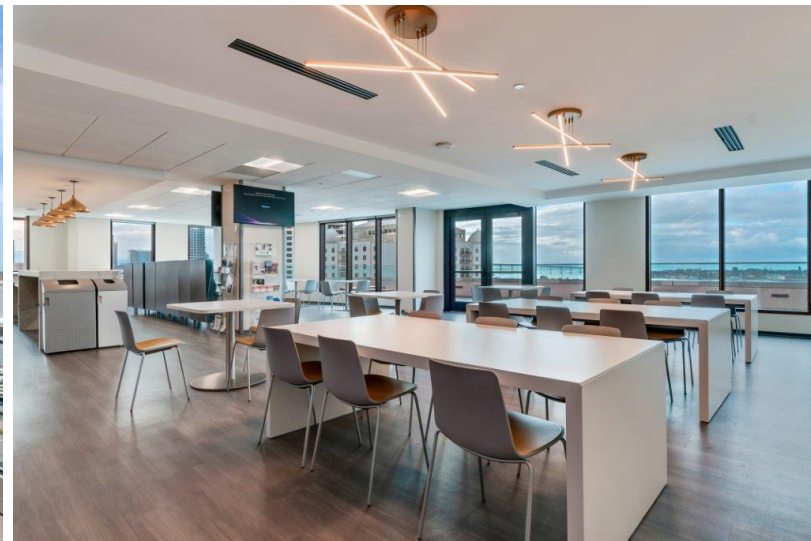
- \$16 million project
- 17 floors
- 373,000 sq. ft.
- 1,500 workstations
- 350 private offices
- 60 conference rooms, multipurpose training rooms, and break rooms



A CASE STUDY

Naval Building One

bkm.



A CASE STUDY

Naval Building One



BUSINESS ISSUES ADDRESSED

Attract, Develop, Engage: The style and design utilized for the Naval Building One building encourages engagement while maintaining safe social distancing. Mission Graphics sourced by JVA Art Group warm the space and Takeform's interior and exterior signage and wayfinding system enhance productivity.

Enhance Collaboration: With teams coming together from 18 different work sites, Naval Building One provides a newly unified front and gives all an efficient, modern workspace and increased productivity.

Reflect Work Culture: Naval Building One features highly customized private offices, collaborative conference rooms, centralized command rooms, and more to suit the exacting needs of the U.S. Navy.

Improve Wellbeing: Ergonomic workspaces all include height-adjustable desks, dual monitor arms, increased airflow, and natural lighting for healthy and happy workers.

SERVICES PROVIDED

- Design Services
- Equipment and Furniture Sourcing
- Art and Signage
- Site Furnishings
- Project Management



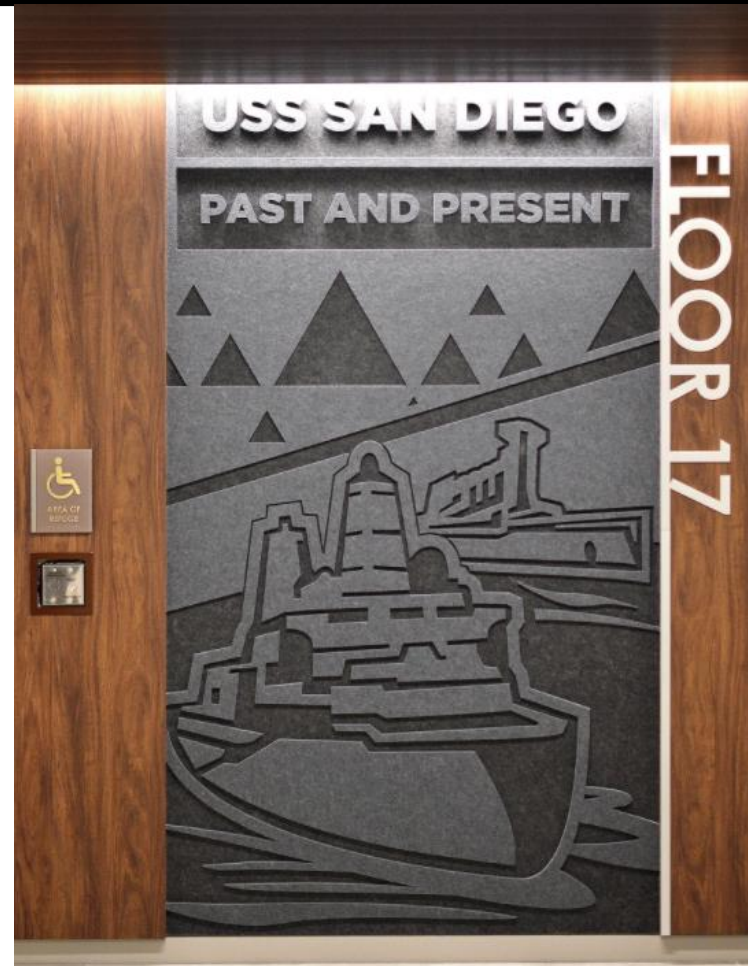
A CASE STUDY

Naval Building One

bkm.

Being a San Diego born and bred company, we love being able to support our military in the area, and what better way to support the men and women who serve than to provide a comfortable and functional workspace that helps unlock productivity and make life easier while at work.

Jim Skidmore
CEO, bkm OfficeWorks



It was a very deep, extensive design build after we were selected as the vendor of record. We became their single-source partner for several services and helped to keep things simple for the client, even through multiple scope changes.

Dillon Mahoney
Vice President of Sales, bkm OfficeWorks

